



START-UP GUIDE

2022

SUMMARY

1 | REGISTER WITH AUTOFX BROKER

| PAGE 2

2 | FOLLOW A STRATEGY

| PAGE 5

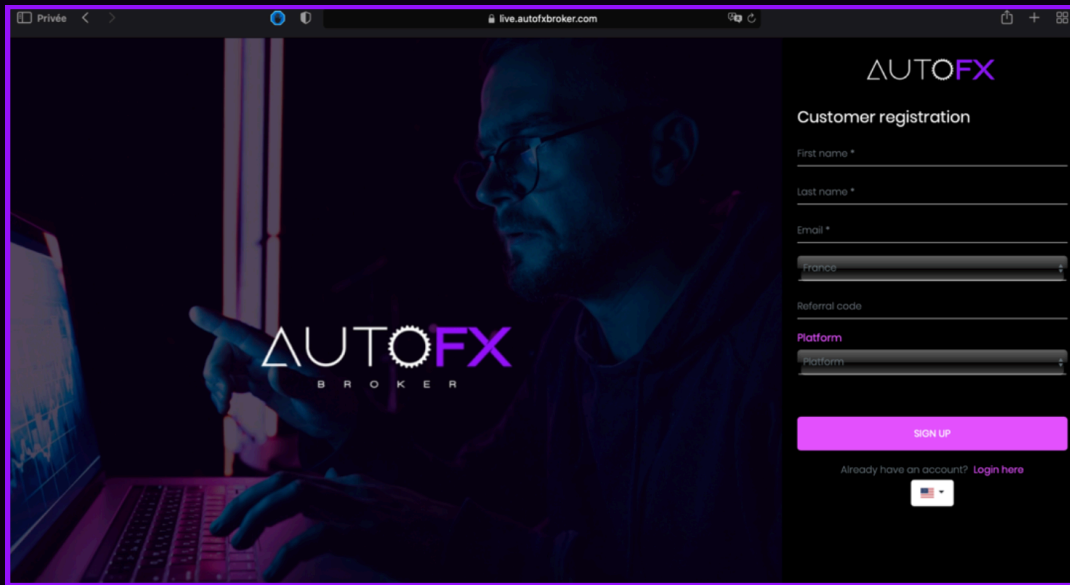
3 | USEFUL LINKS

| PAGE 8

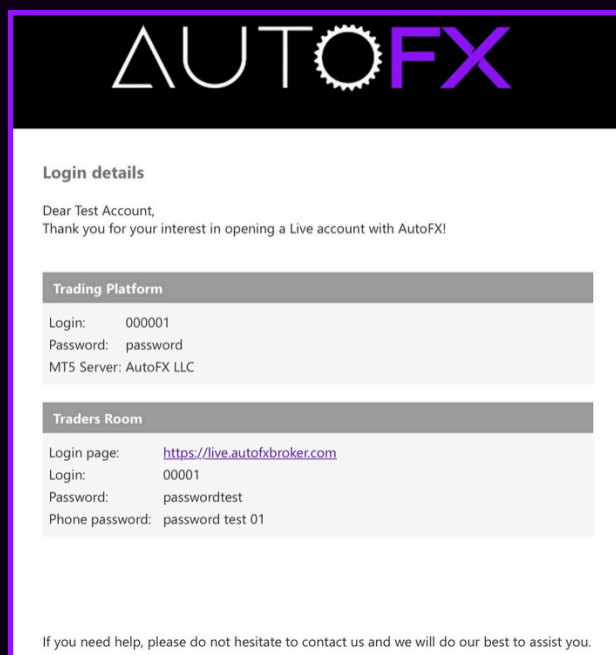
1 | REGISTER WITH AUTOFX BROKER

STEP 1 | REGISTER AT AUTOFX VIA THE FOLLOWING LINK:

<https://live.autofxbroker.com/signup/default>

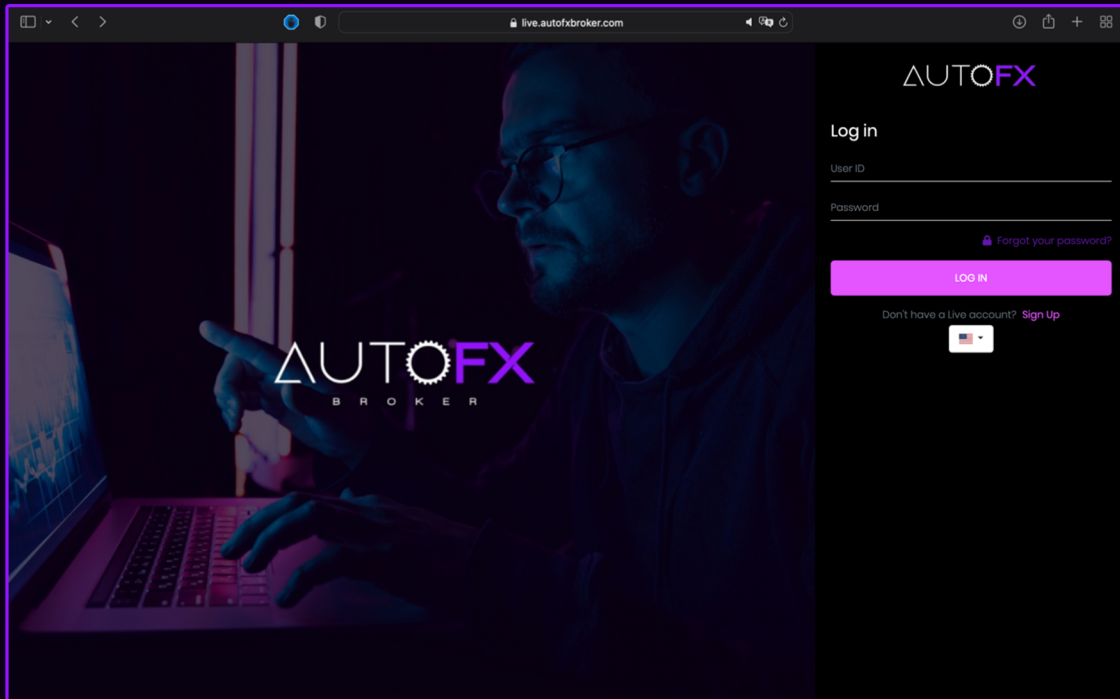


STEP 2 | ONCE REGISTERED, GO TO YOUR MAILBOX TO SEE YOUR LOGIN DETAILS FOR THE BROKER



STEP 3 | CONNECT TO THE BROKER WITH YOUR TRADERS ROOM CREDENTIALS (SEE ABOVE):

Login link : <https://live.autofxbroker.com/login>

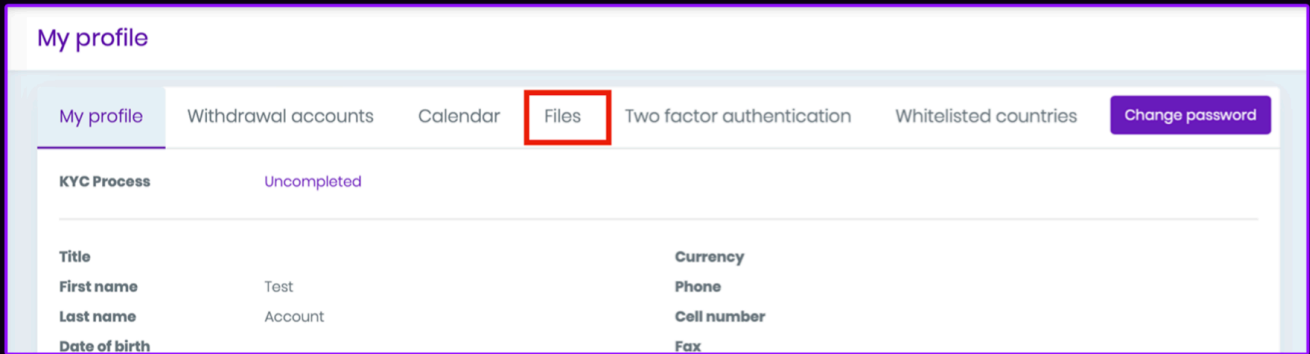


STEP 4 | GO TO THE TAB MY PROFILE

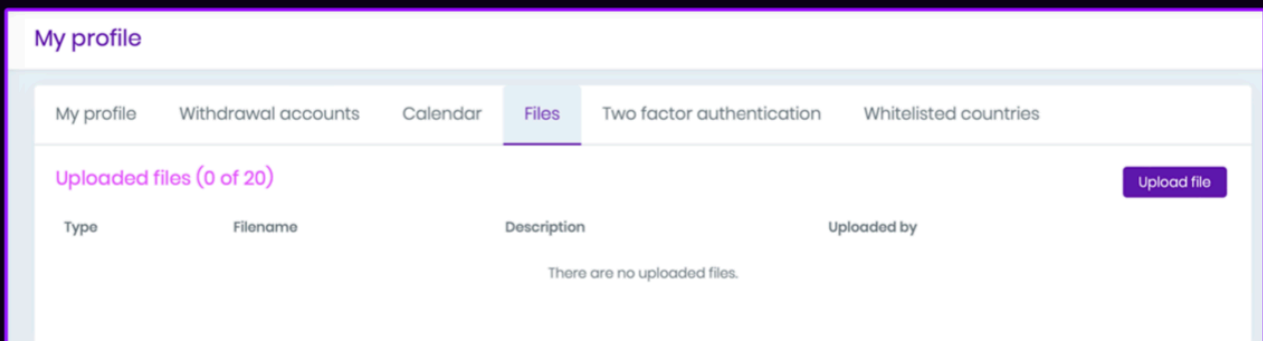
| Wallet | Leverage | Balance | Equity | Credits | Trading account |
|--------|----------|----------|--------|---------|-----------------|
| #47236 | 1:100 | EUR 0.00 | N/A | 0.00 | |

| Indicator | Actual | Consensus | Previous |
|-------------------------------------|-----------|-----------|----------|
| 4-Week Bill Auction | 0.135% | | 0.100% |
| Tokyo CPI ex Food, Energy (YoY) | -0.4% | -0.7% | -0.6% |
| Tokyo CPI ex Fresh Food (YoY) | 0.8% | 0.4% | 0.5% |
| Tokyo Consumer Price Index (YoY) | 1.3% | 1.5% | 1.0% |
| Corporate Service Price Index (YoY) | 0.4% | | 1.2% |
| Foreign Bond Investment | ¥-164.7B | | |
| Foreign Investment in Japan Stocks | ¥-1050.4B | | |

STEP 5 | GO TO THE "FILES" TAB



STEP 6 | CLICK ON THE UPLOAD A FILE TAB AND UPLOAD A PROOF OF ADDRESS AND YOUR IDENTITY DOCUMENTS

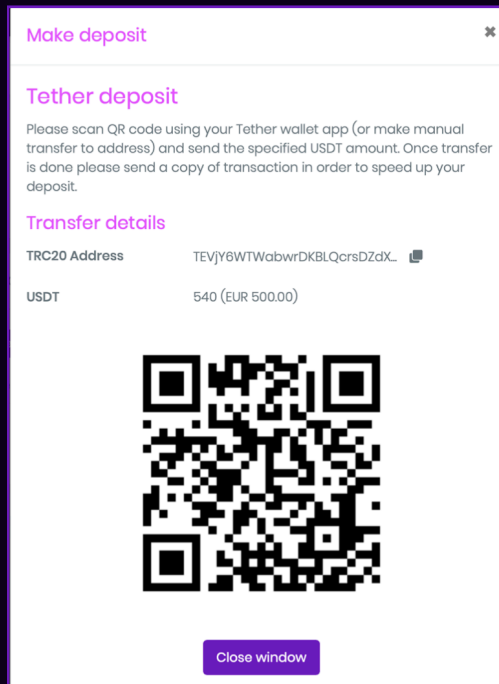
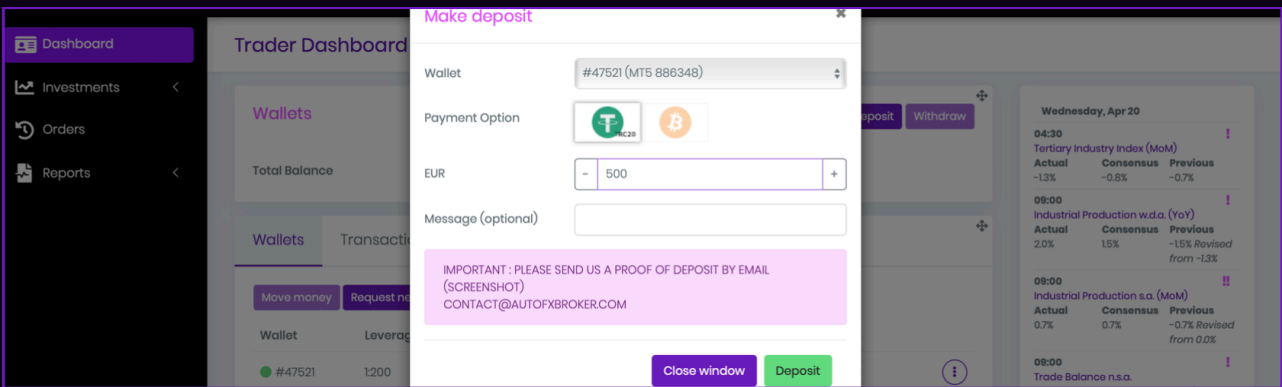


STEP 7 | GO TO THE DASHBOARD TAB AND MAKE YOUR DEPOSIT

If you want to deposit in crypto and you don't have an account on an exchange, find the tutorial to create an account on Binance and buy cryptocurrency [here](#).

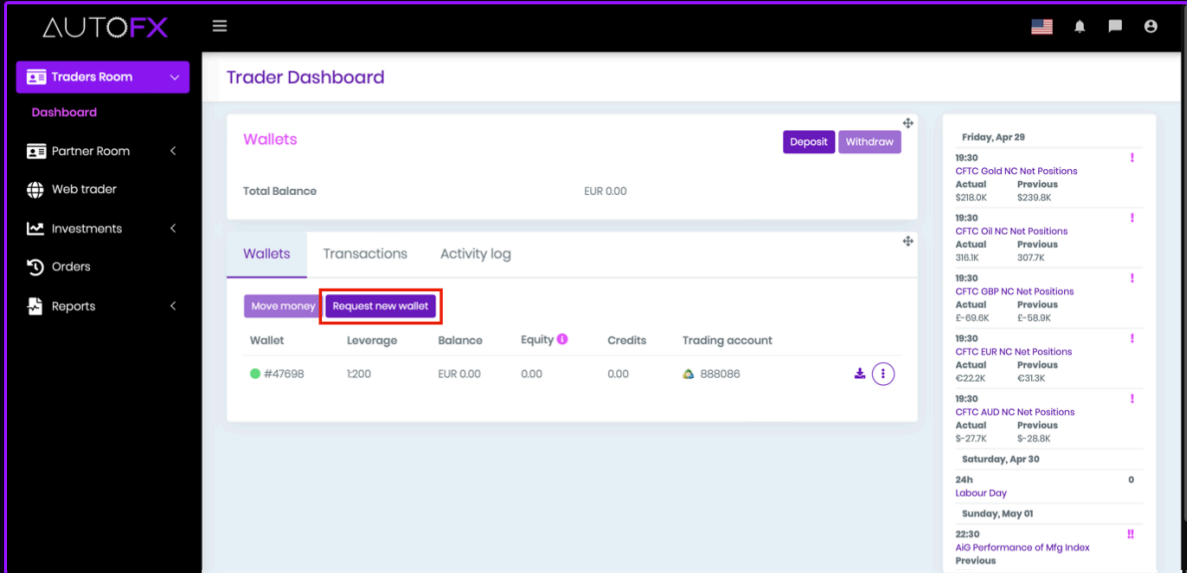
NOTE: IF YOU DEPOSIT IN CRYPTO, PLEASE SEND US A PROOF OF DEPOSIT BY EMAIL (SCREENSHOT)

contact@autofxbroker.com



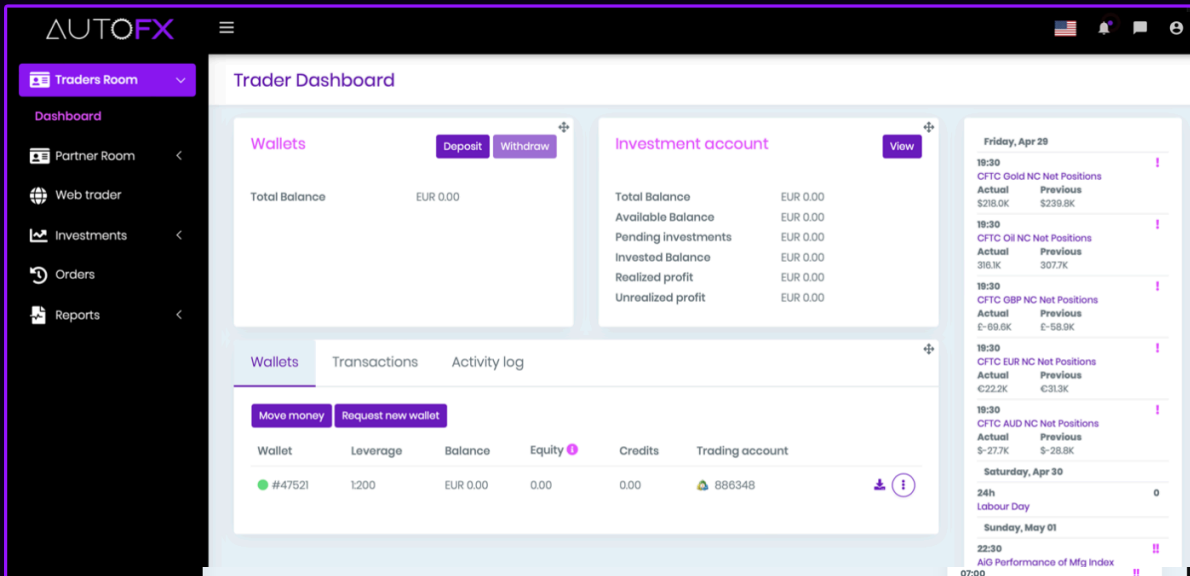
2 | FOLLOW A STRATEGY

STEP 1 | GO TO YOUR AUTOFX DASHBOARD AND CLICK ON 'REQUEST A NEW WALLET'

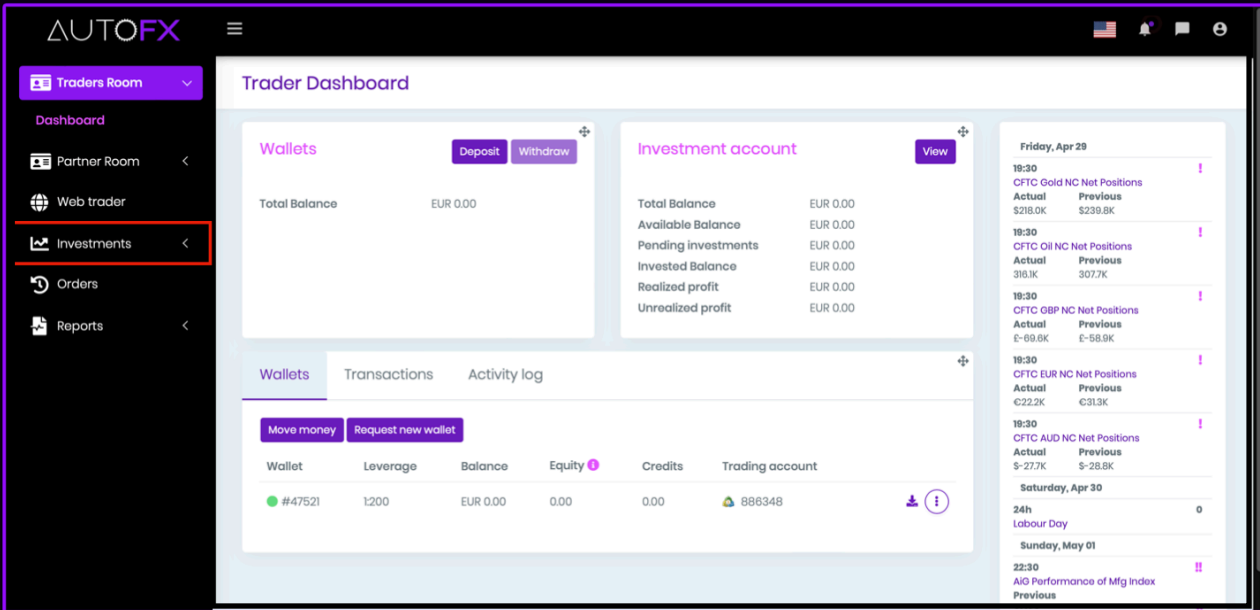


STEP 2 | WAIT FOR OUR TEAMS TO OPEN AN INVESTMENT ACCOUNT FOR YOU (24 HOURS MAXIMUM)

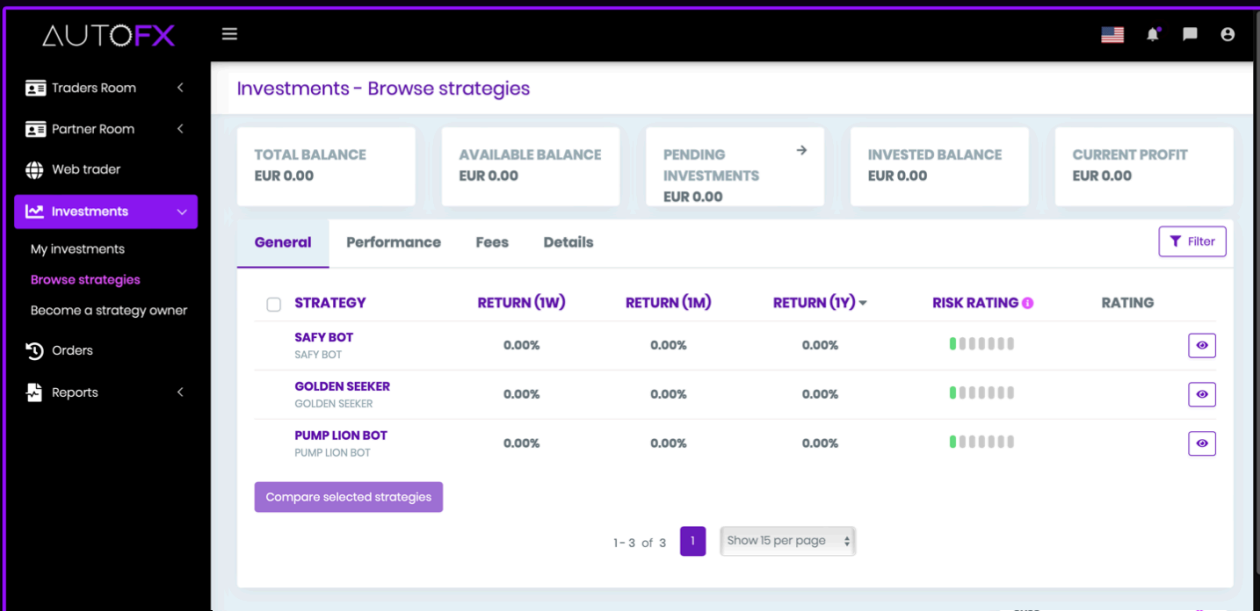
your dashboard once your investment account is created:



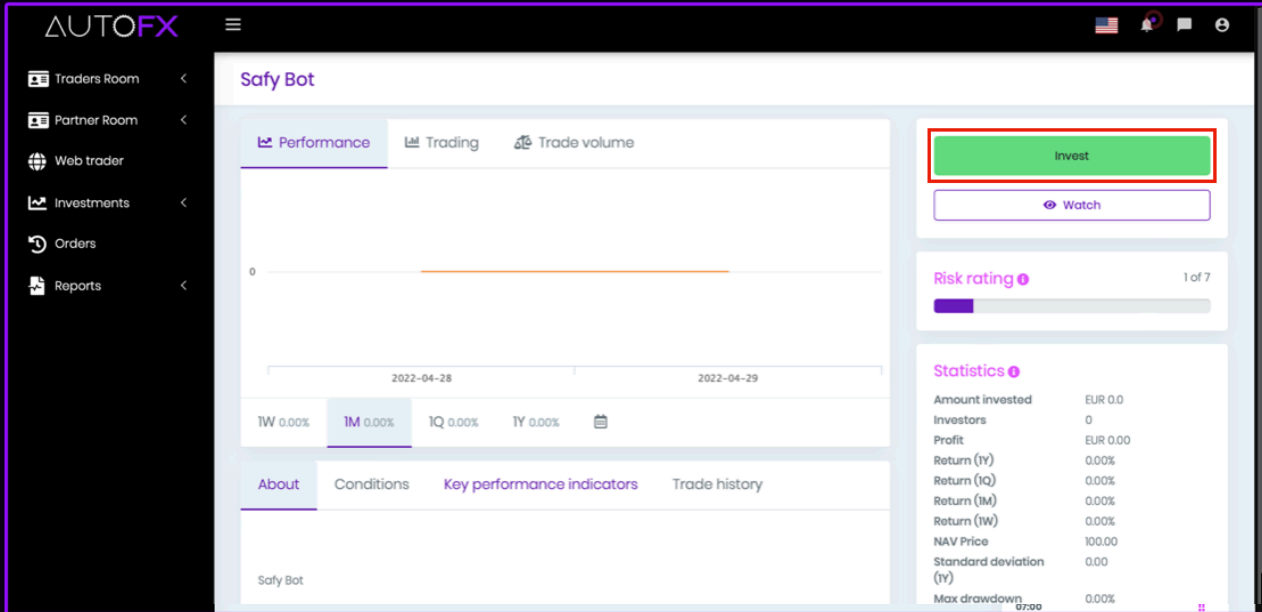
STEP 3 | CLICK ON "INVESTMENTS" THEN "BROWSE STRATEGIES"



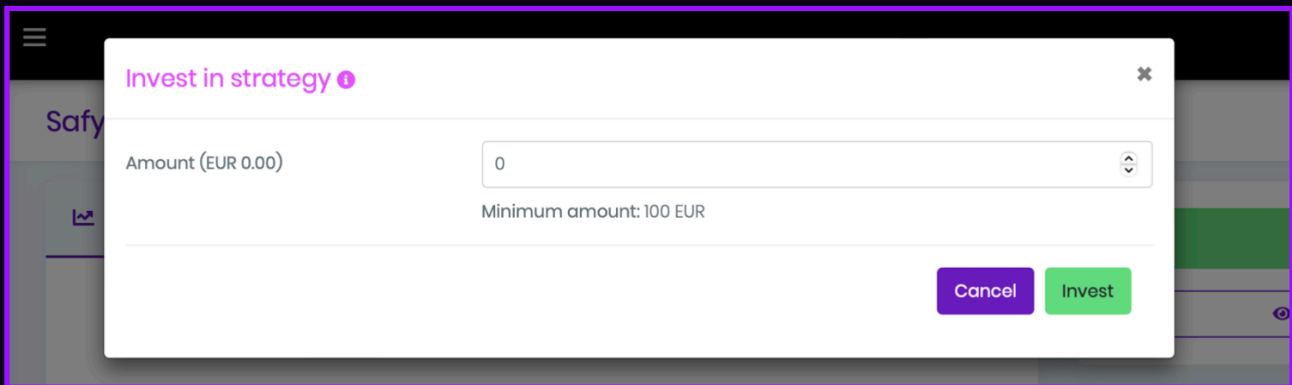
STEP 4 | CHOOSE THE STRATEGY THAT BEST SUITS YOUR NEEDS, THEN CLICK ON THE STRATEGY NAME



STEP 5 | CLICK ON INVEST



STEP 6 | ENTER THE DESIRED AMOUNT



3 | USEFUL LINKS

Tutorial to follow the results of the different strategies

[Click here](#)

Live results of the different strategies

[Click here](#)

Daily strategy results on Telegram

[Click here](#)

Telegram channel for important announcements

[Click here](#)

Binance account creation guide and presentation
PDF deposit

[Click here](#)